



**move**  
Property Sales & Lettings

**Suffolk House South Suffolk Square, Cheltenham**

Guide Price **£270,000**





## Flat 1

Suffolk House South Suffolk Square,  
Cheltenham

Council Tax band: C

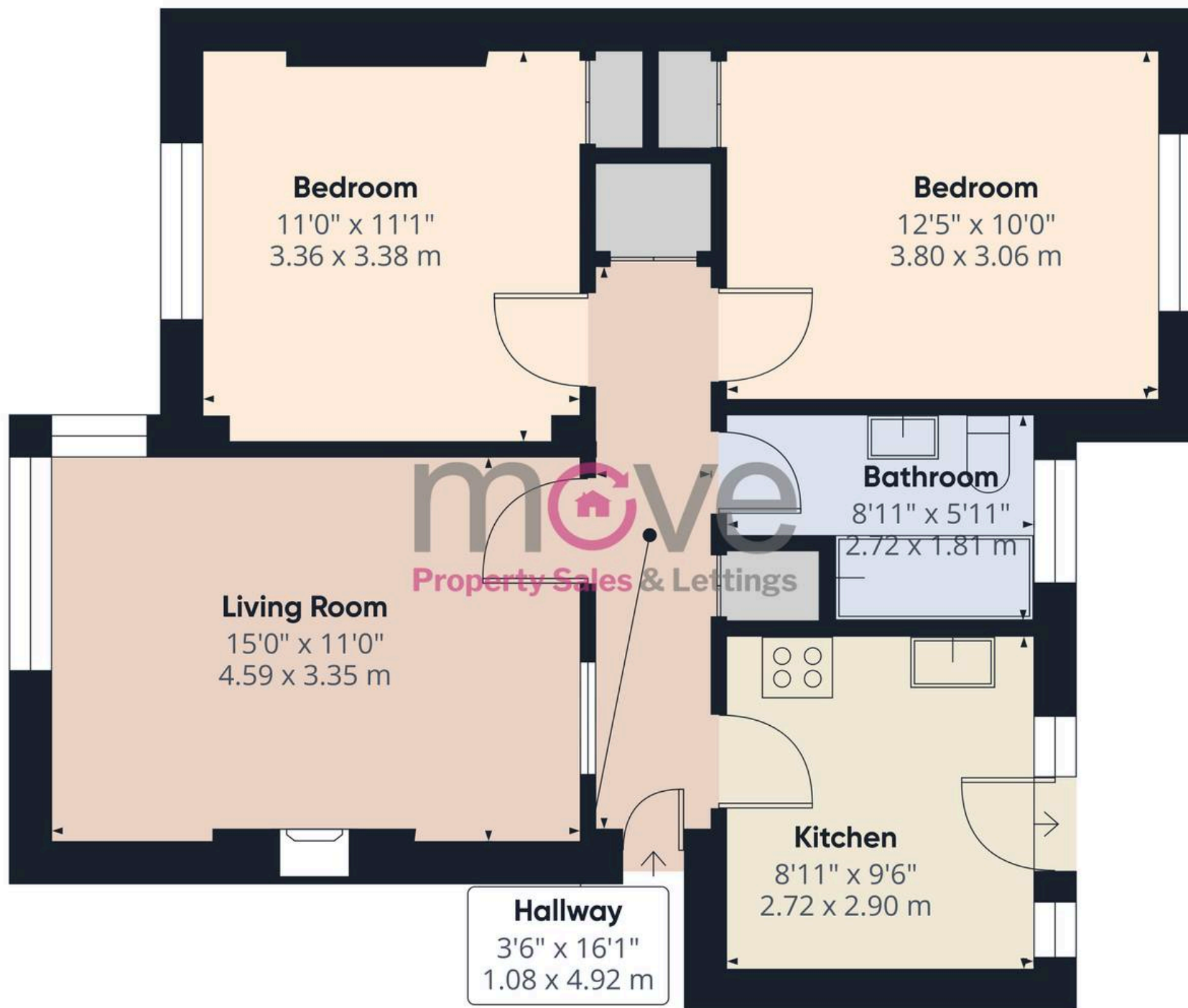
Tenure: Leasehold

EPC Energy Efficiency Rating: D

EPC Environmental Impact Rating:

- Spacious Two Double Bedroom Apartment
- Off Road Parking
- Ground Floor
- Desirable Location
- Communal Gardens
- Gas Central Heating





Approximate total area<sup>(1)</sup>

634.73 ft<sup>2</sup>

58.97 m<sup>2</sup>

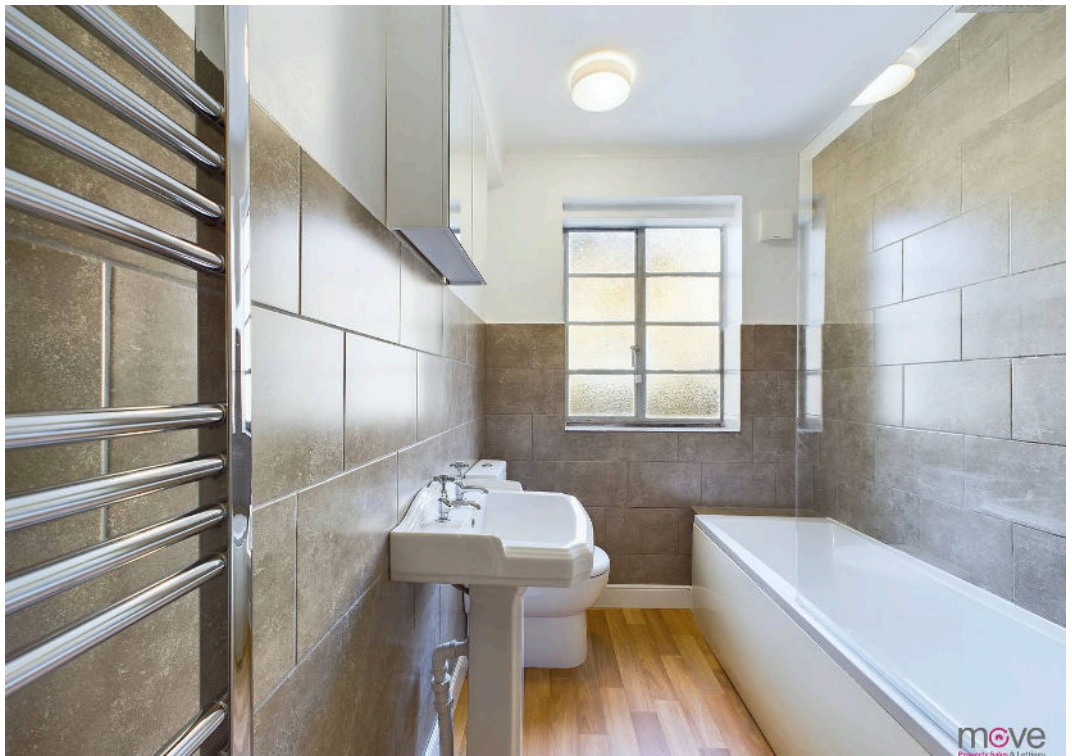
(1) Excluding balconies and terraces

While every attempt has been made to ensure accuracy, all measurements are approximate, not to scale. This floor plan is for illustrative purposes only.

Calculations were based on RICS IPMS 3C standard. Please note that calculations were adjusted by a third party and therefore may not comply with RICS IPMS 3C.

GIRAFFE360









## Move Estate Agents Cheltenham

1 The Clarence Clarence Parade, Cheltenham - GL50 3NY

01242 257333

[cheltenham@move.uk.net](mailto:cheltenham@move.uk.net)

[move.uk.net/](http://move.uk.net/)

**move**  
Property Sales & Lettings