



**move**  
Property Sales & Lettings

Brooklyn Gardens, Cheltenham  
£425,000





## Brooklyn Gardens

Cheltenham, Cheltenham

Council Tax band: D

Tenure: Freehold

EPC Energy Efficiency Rating:

EPC Environmental Impact Rating:

- Extended Semi Detached House
- Immaculate Condition
- Spacious Open Plan Downstairs
- South West Facing Wildlife Garden
- Beautifully Decorated Throughout
- Ample Driveway Parking
- Popular Residential Location
- Spacious Seperate Utility Room and Outside Storage
- Perfect For First Time Buyers or Growing Families





Floor 0 Building 1



Floor 1 Building 1



Floor 0 Building 2

**Approximate total area<sup>(1)</sup>**

1152.05 ft<sup>2</sup>

107.03 m<sup>2</sup>

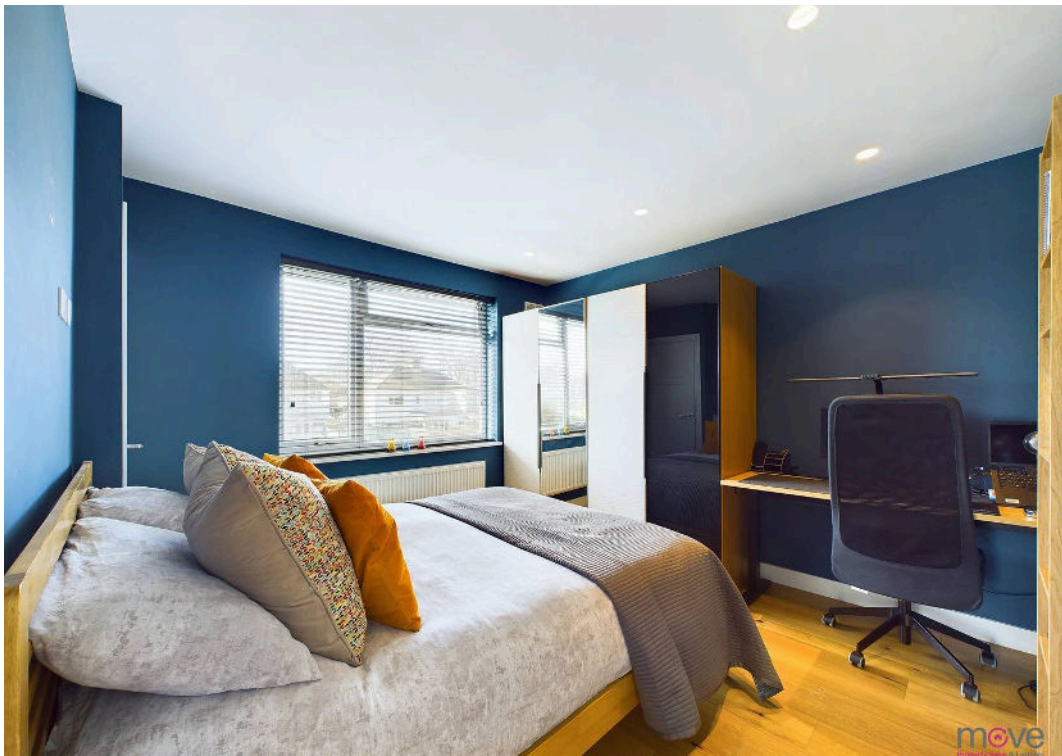
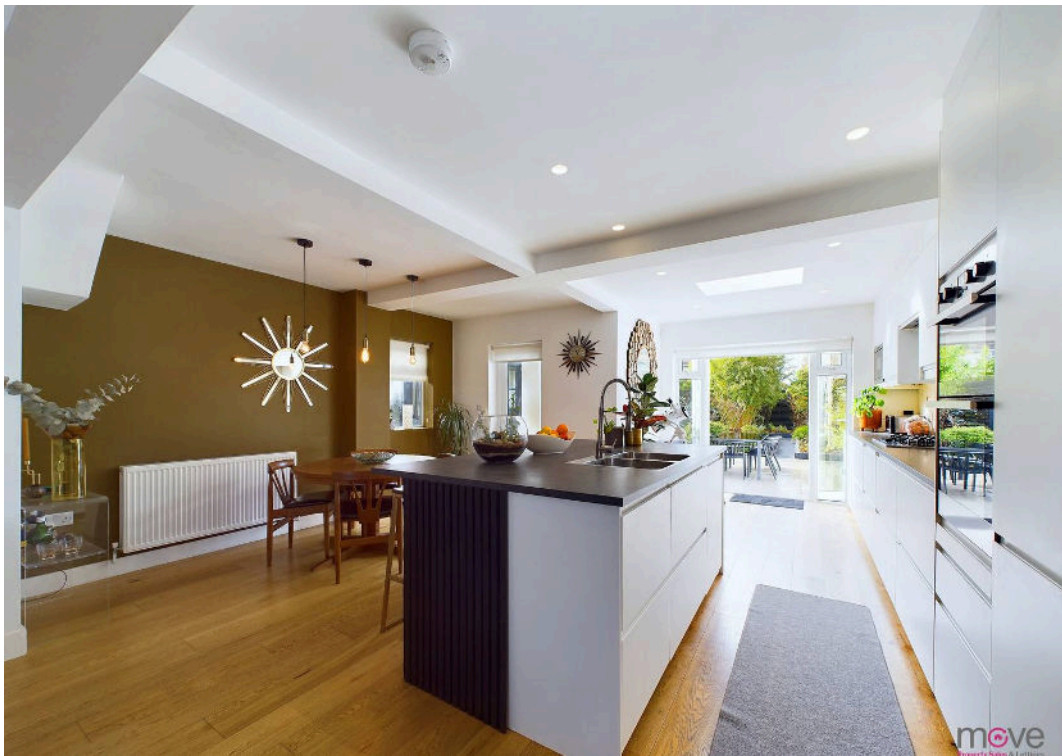
(1) Excluding balconies and terraces

While every attempt has been made to ensure accuracy, all measurements are approximate, not to scale. This floor plan is for illustrative purposes only.

Calculations were based on RICS IPMS 3C standard. Please note that calculations were adjusted by a third party and therefore may not comply with RICS IPMS 3C.

**GIRAFFE360**









## Move Estate Agents Cheltenham

1 The Clarence Clarence Parade, Cheltenham - GL50 3NY

01242 257333

[cheltenham@move.uk.net](mailto:cheltenham@move.uk.net)

[move.uk.net/](http://move.uk.net/)

**move**  
Property Sales & Lettings