



3 Union House St. Georges Place, Cheltenham  
£315,000







## 3 Union House St. Georges Place

Cheltenham, Cheltenham

Council Tax band: D

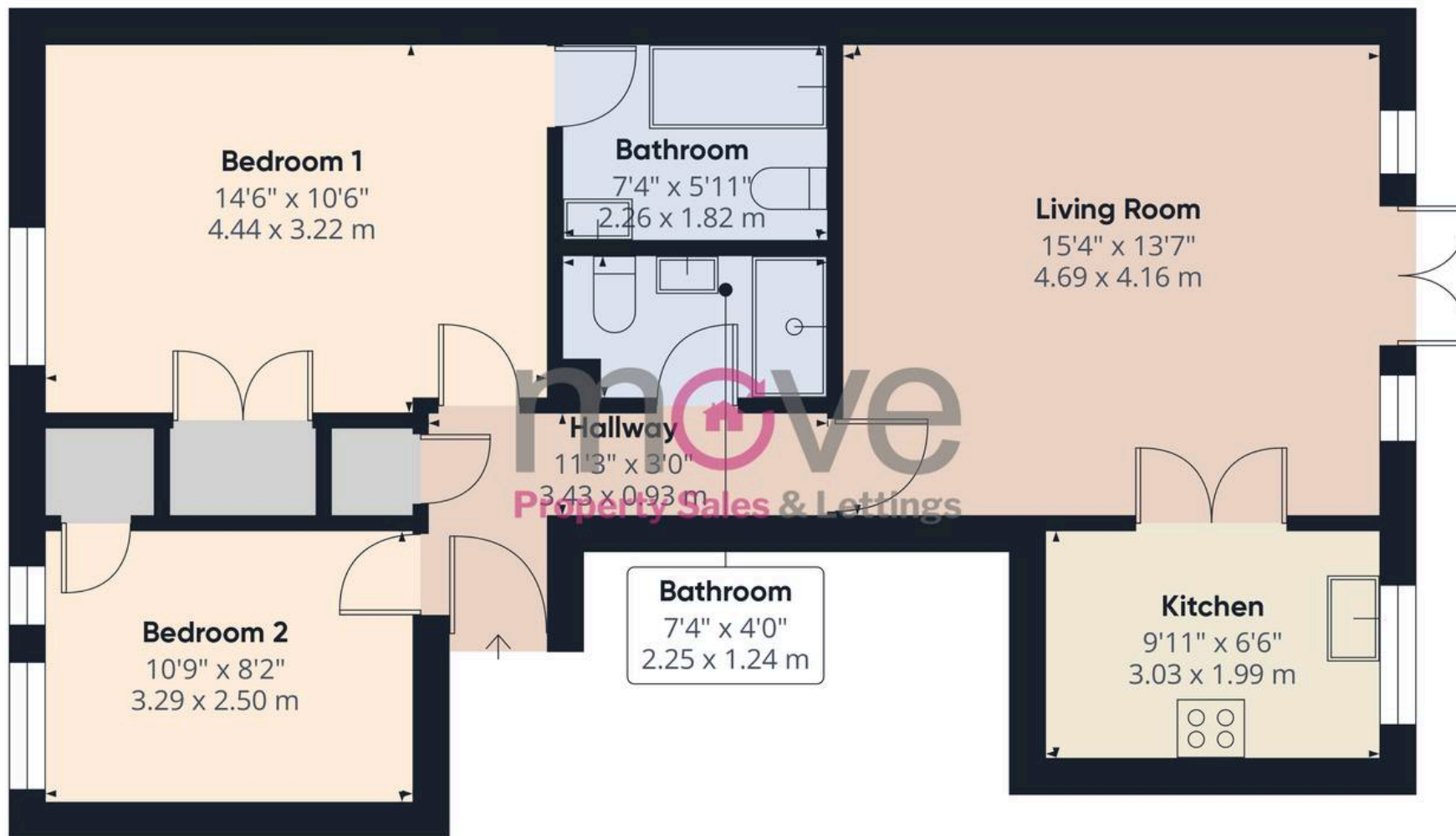
Tenure: Leasehold

EPC Energy Efficiency Rating: C

EPC Environmental Impact Rating:

- Two Double Bedroom Apartment
- No Onward Chain
- Beautifully Presented Throughout
- Spacious Living Room with Private Balcony
- Fitted Wardrobes in Both Bedrooms
- Allocated Parking in Central Cheltenham
- Well Maintained Communal Gardens
- En Suite to Primary Bedroom





Approximate total area<sup>(1)</sup>

669.2 ft<sup>2</sup>

62.17 m<sup>2</sup>

(1) Excluding balconies and terraces

While every attempt has been made to ensure accuracy, all measurements are approximate, not to scale. This floor plan is for illustrative purposes only.

Calculations were based on RICS IPMS 3C standard. Please note that calculations were adjusted by a third party and therefore may not comply with RICS IPMS 3C.

GIRAFFE 360









## Move Estate Agents Cheltenham

1 The Clarence Clarence Parade, Cheltenham - GL50 3NY

01242 257333

[cheltenham@move.uk.net](mailto:cheltenham@move.uk.net)

[move.uk.net/](http://move.uk.net/)