





Ascot House Old Gloucester Road

Hayden, Cheltenham

Council Tax band: C

Tenure: Freehold

EPC Energy Efficiency Rating: D

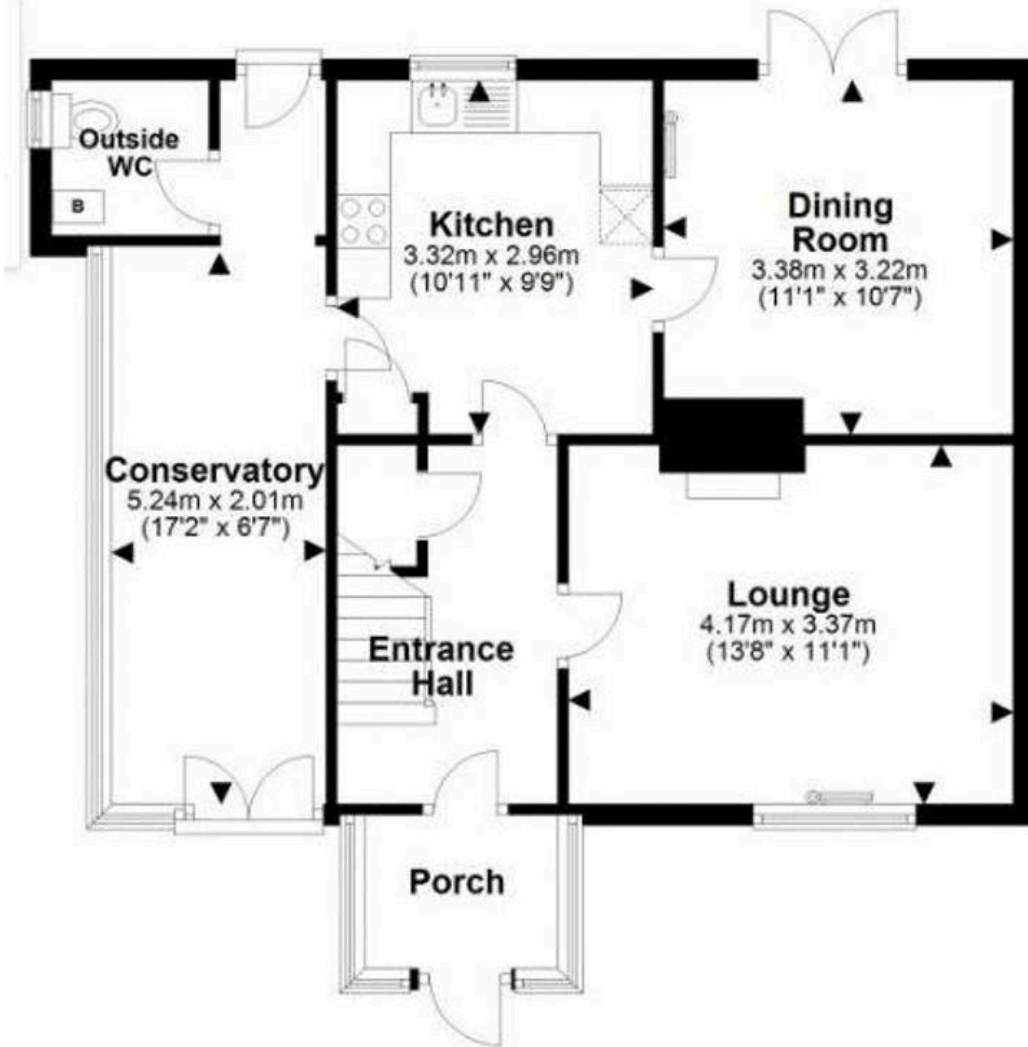
EPC Environmental Impact Rating:

- Three Bedroom Semi Detached
- Rural Setting With Stunning Views
- Two Reception Rooms
- Generous Driveway
- Potential For Extension Subject To Planning Permission
- Large Private Garden
- Downstairs WC & Utility Area



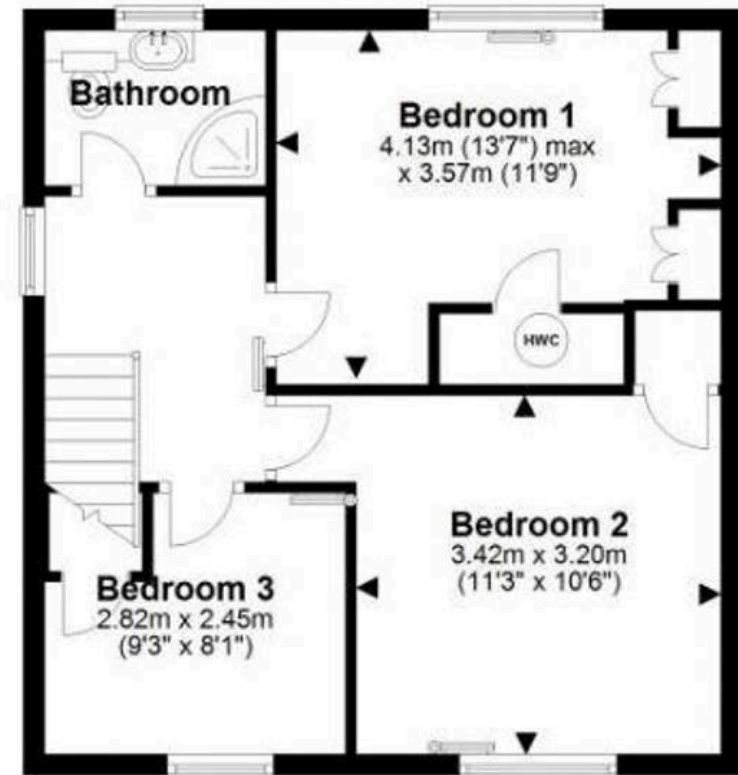
Ground Floor

Approx. 61.0 sq. metres (656.7 sq. feet)



First Floor

Approx. 43.7 sq. metres (470.1 sq. feet)



Total area: approx. 104.7 sq. metres (1126.8 sq. feet)

Please note this floor plan is for marketing purposes and is to be used as a guide only. All efforts have been made to ensure its accuracy.
Plan produced using PlanUp.

Ascot House, CHELTENHAM





Move Estate Agents Cheltenham

1 The Clarence Clarence Parade, Cheltenham - GL50 3NY

01242 257333

cheltenham@move.uk.net

move.uk.net/

move
Property Sales & Lettings